

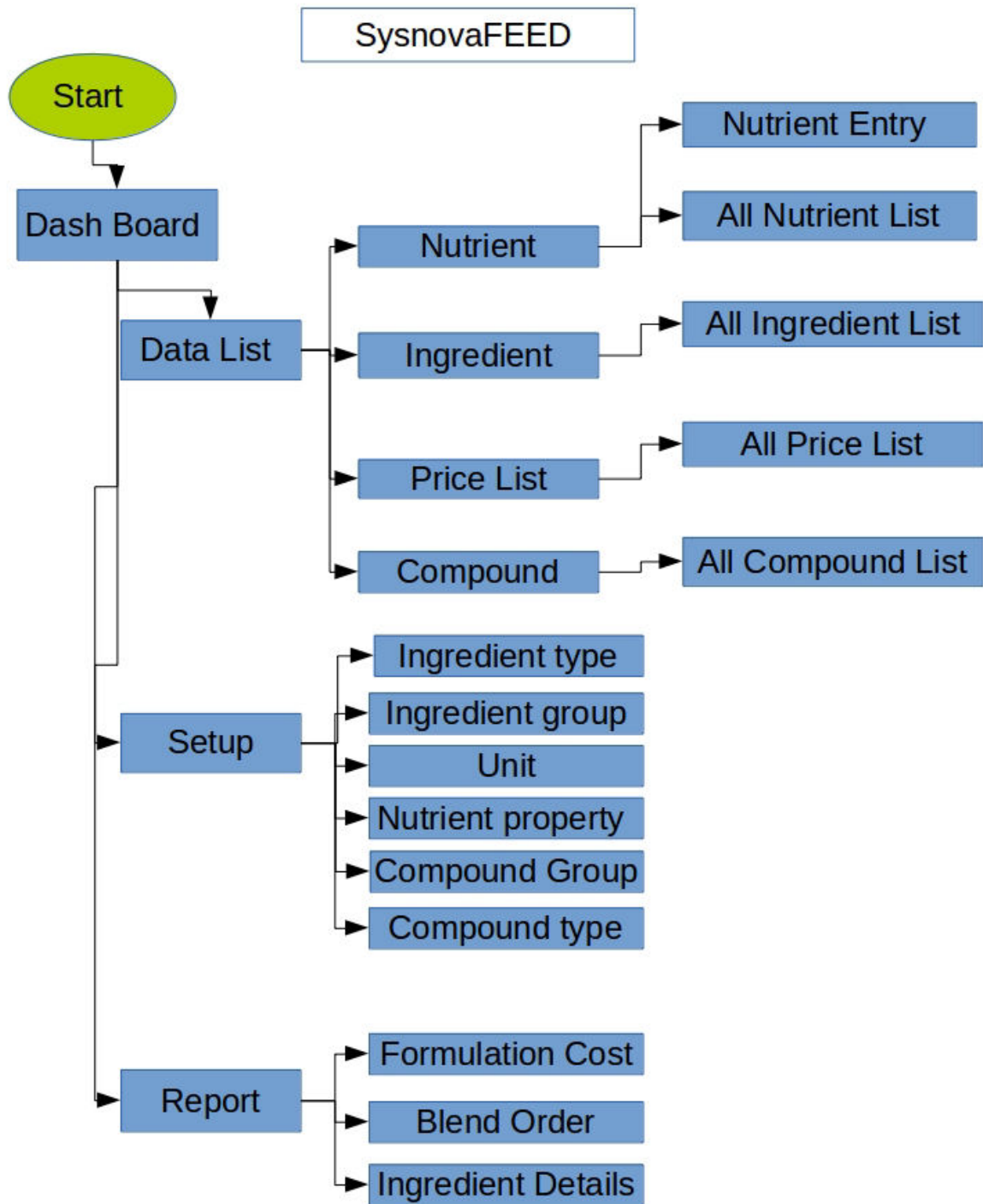
SysnovaFeed User Guide

SysnovaFeed is a revolutionary free/open-source least-cost feed formulation software

By

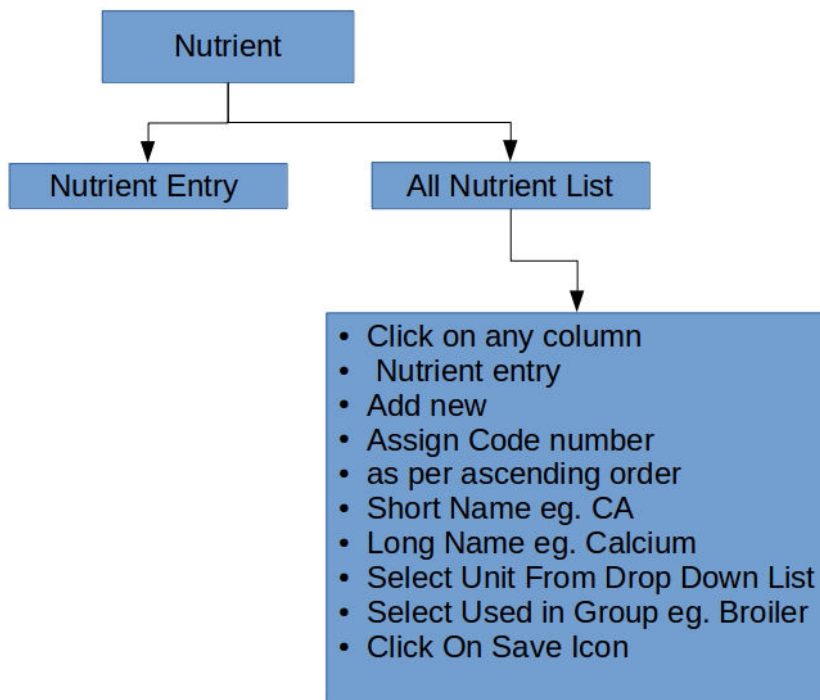
Sysnova Information Systems Limited

sysnova



Data List :

Nutrient Entry



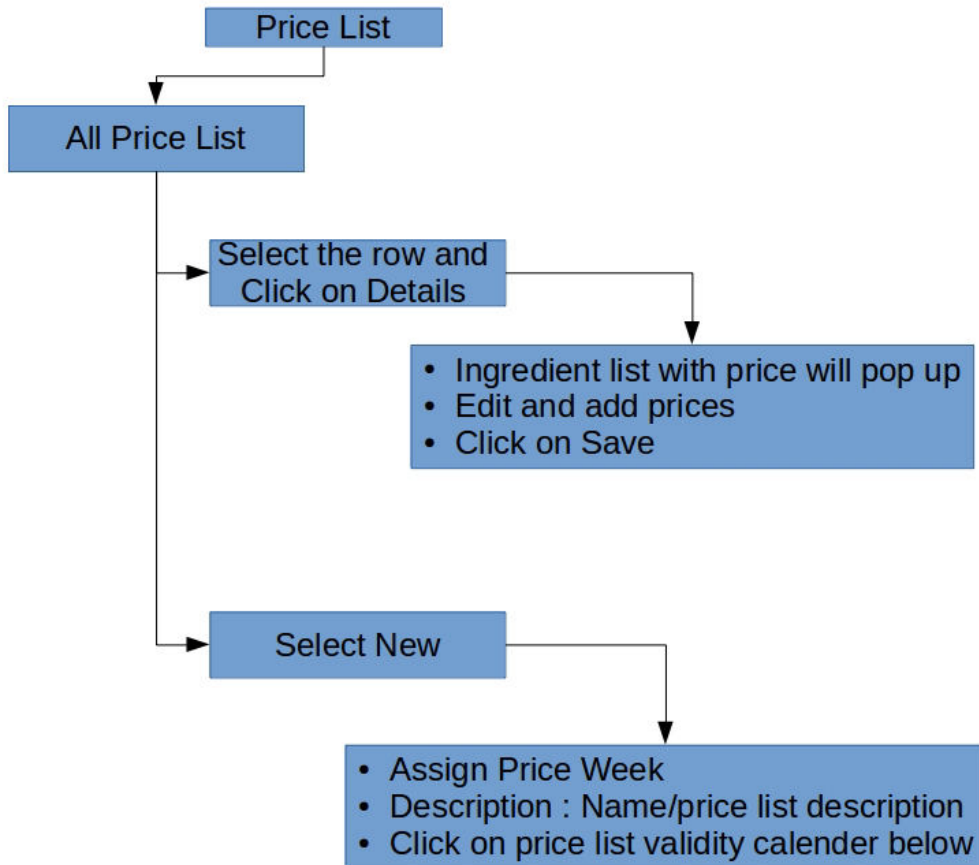
Ingredient Entry

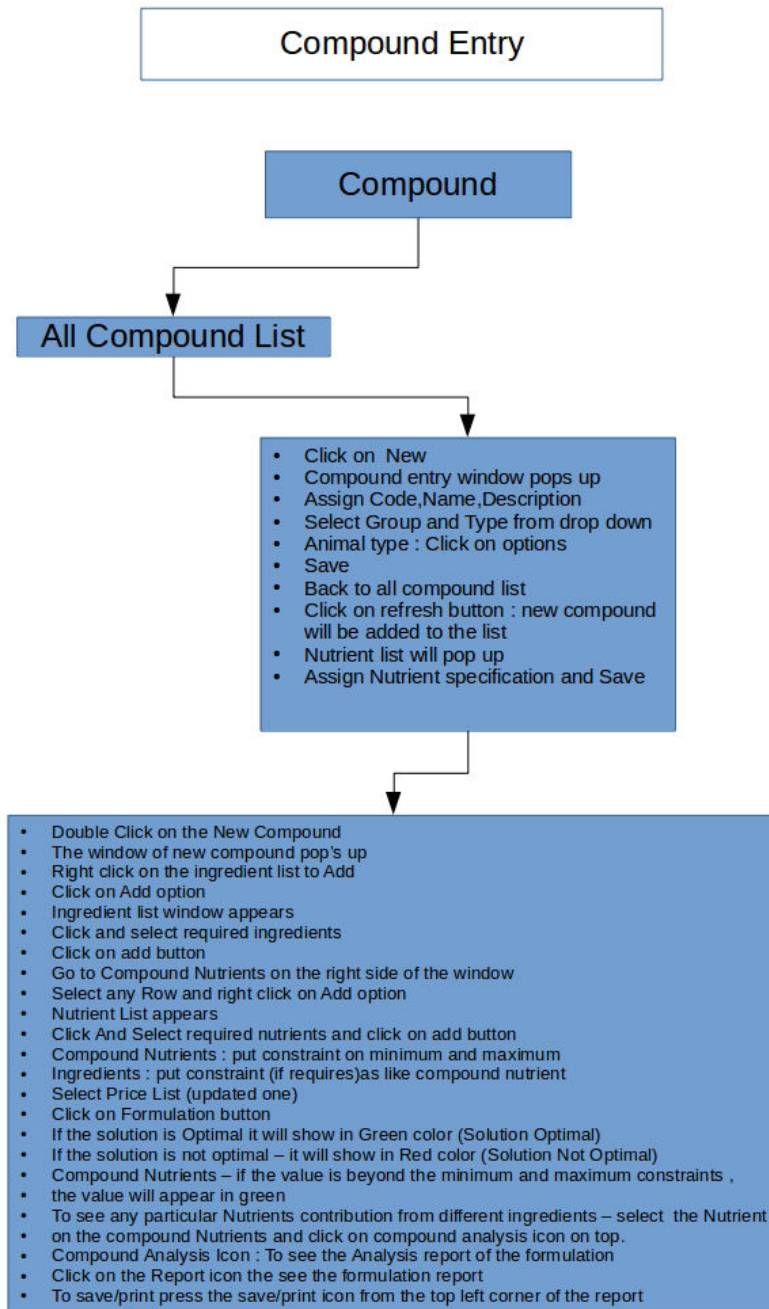
Ingredient

All Ingredient List

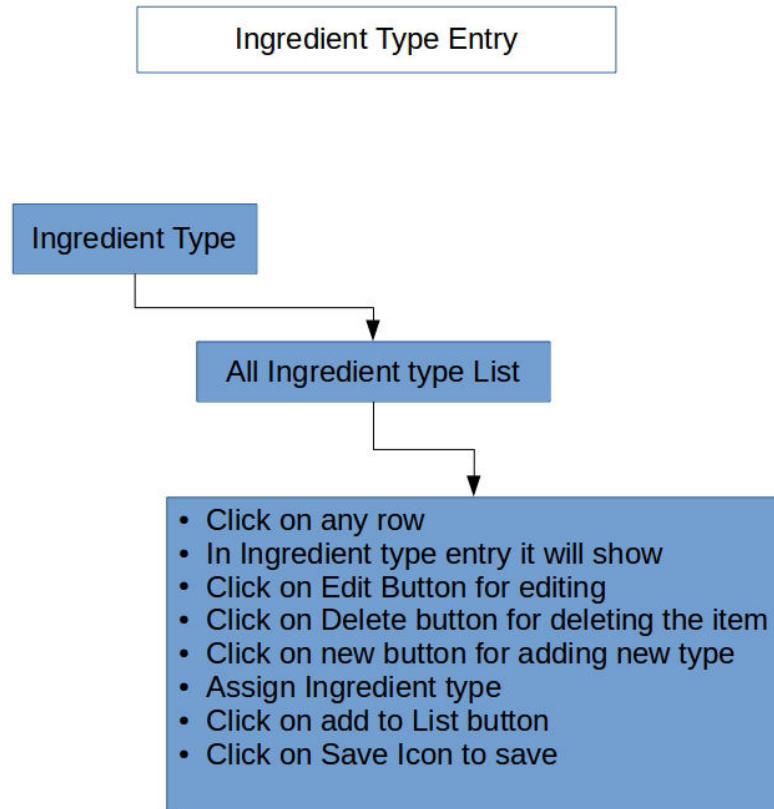
- Click on New
- Code: Assign Code No
- Long Name : Write full name of ingredient
- Scientific name : Write scientific name
- Group : Select from drop down list
- Type : Select from drop down list
- Click Save
- Nutrient list will pop up
- Assign Nutrient specification and Save

Price List Entry

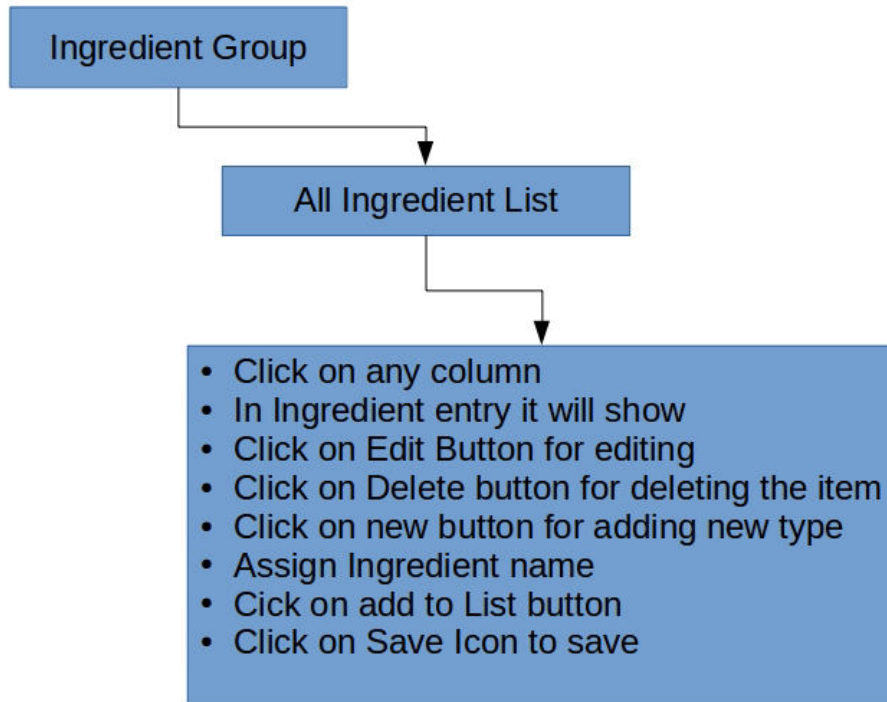




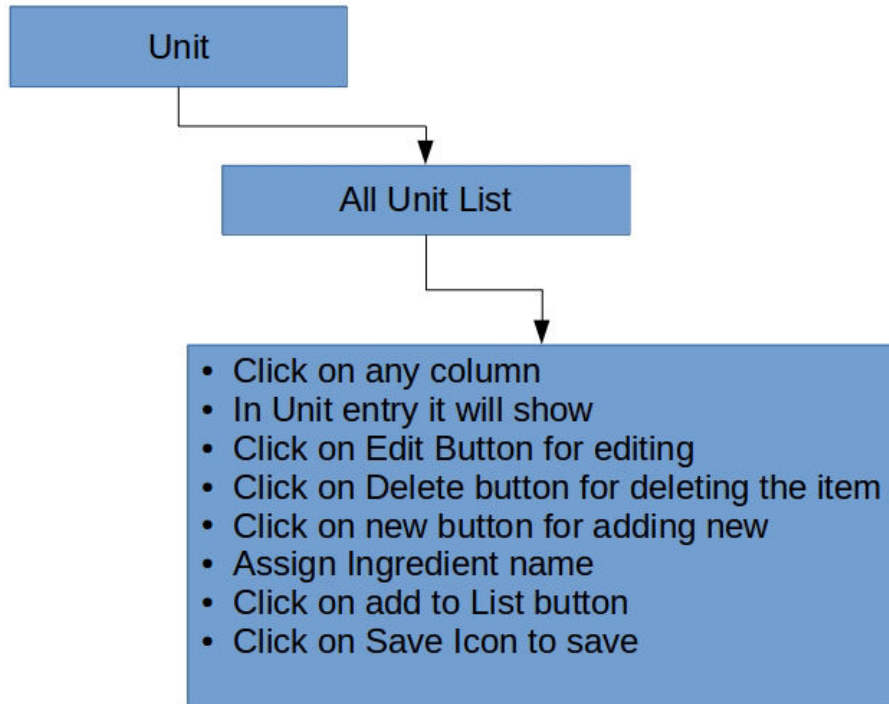
Setup :



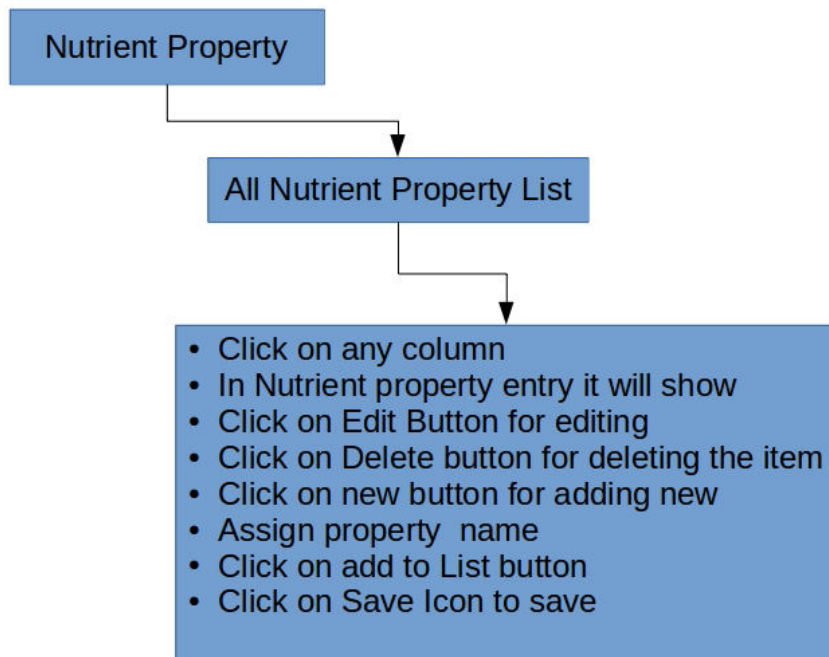
Ingredient Group Entry



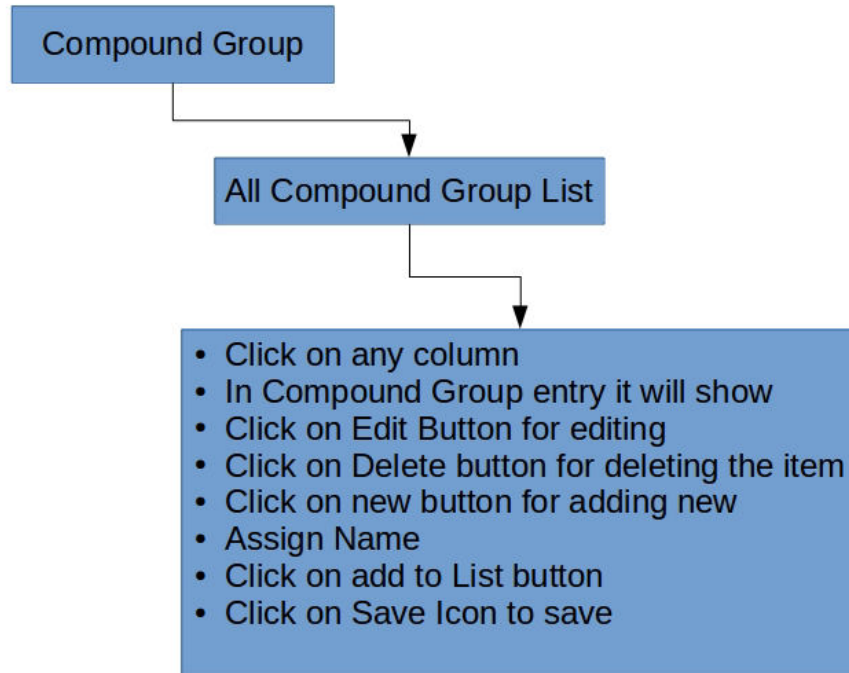
Unit Entry



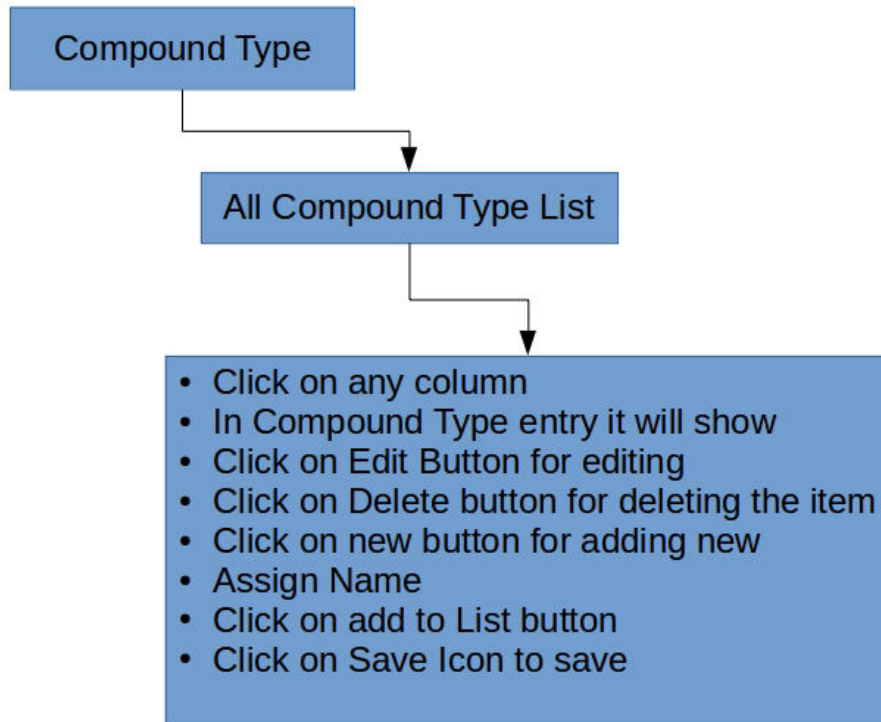
Nutrient Property Entry



Compound Group Entry



Compound Type Entry



Report :

Formulation Cost Report

Formulation Cost

- Click on formulation cost , it will pop up a formulation cost report window
- Select Compound from drop down
- Click on Submit Button for getting the report
- Click on Cancel button for canceling the report window

Blend Order Report

Blend Order

- Click on Blend Order , it will pop up a Blend Order report window
- Select Compound from drop down menu
- Click on Submit Button for getting the report
- Click on Cancel button for canceling the report window

Ingredient Details Report

Ingredient Details

- Click on Ingredient Details , it will pop up a Ingredient Details report window
- Select Ingredient from drop down menu
- Click on Submit Button for getting the report
- Click on Cancel button for canceling the report window